



Construction Monitoring



The monitoring of construction quality is being done informally by the communities and the NGO with the local government very regularly. This coupled with the regular weekly review meetings has helped to iron out the bottlenecks in the implementation

The socio-economic surveys have revealed that there is a vast construction labour force that exists within the 29 slums under consideration of the IHSDP project. SA listed out all the names and their skills for every slum and made this information available to the municipal corporation and subsequently to 'Stresscrete India lmted' -the firm appointed by the SMKMC for implementing the projects. This was to encourage as far as possible the hiring of labour force from these slums which would automatically lead to monitoring of the project by the people as they will be involved in the construction of their own homes.

Setting up Systems

The architects of this project are Shelter Associates (SA) which is an NGO and a consultant appointed by the SMKMC to prepare the DPR. However the contract awarded to Stresscrete India was on a



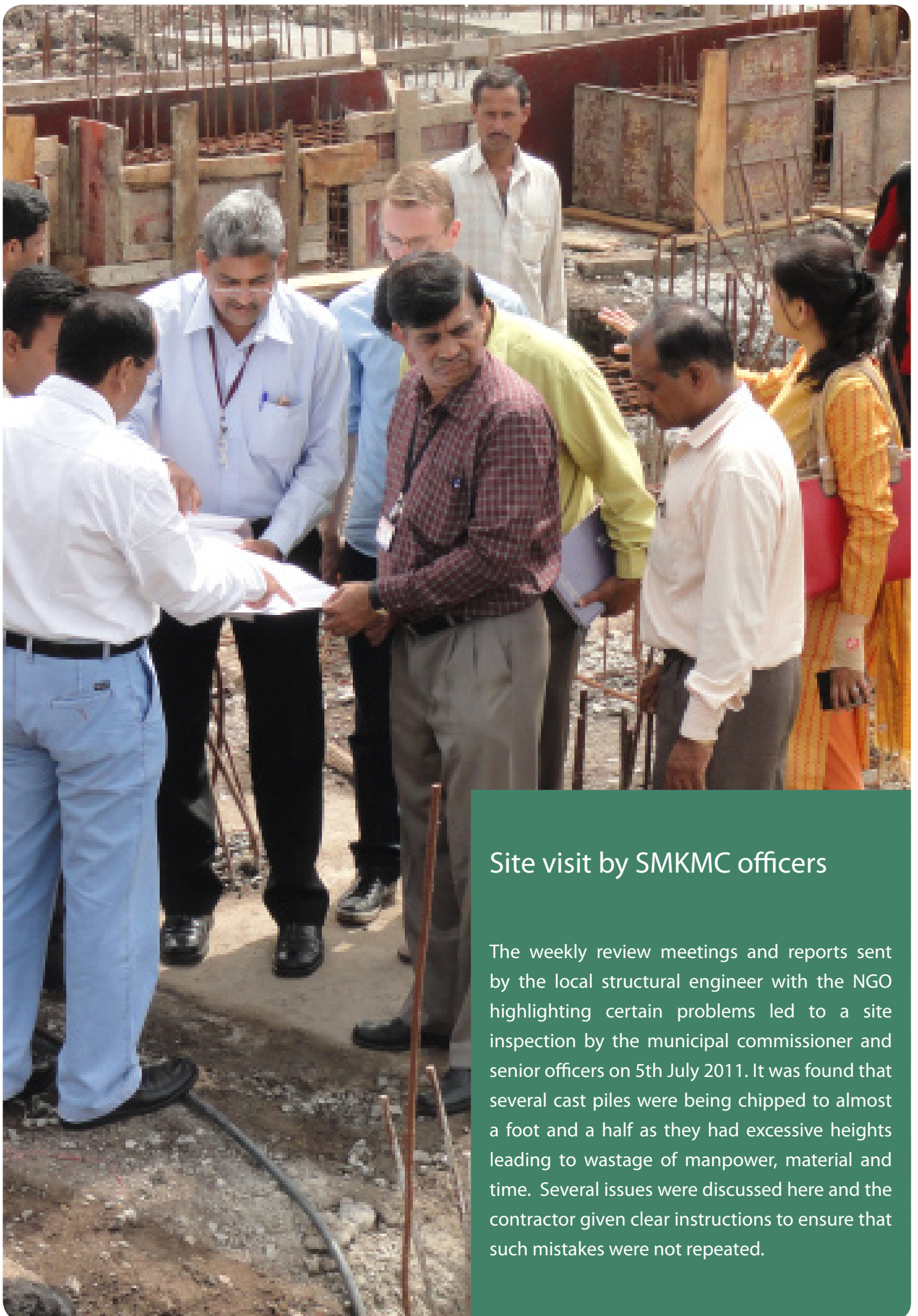
site inspection by NGO

turn key basis which included preparation of all technical drawings by appointing a structural consultant and a local liason architect. This despite the fact that all these drawings have already been submitted by SA. Once a week, the NGO architect and an eminent structural engineer of Sangli who has volunteered, inspect the sites. Then a report is prepared by the engineer which is emailed to the SMKMC. Very simple systems like maintaining a log entry book on site for visitors and their comments, material consumption record, provision of detailed working drawings etc. are being set up due to this sustained effort. T SMKMC has also been consulting the structural engineer working with the NGO, for a second opinion on certain technical drawings.



Women of Sangliwade visiting the Sanjaynagar site on

There are regular committee visits organized as part of the awareness campaign which also doubles up as quality check



Site visit by SMKMC officers

The weekly review meetings and reports sent by the local structural engineer with the NGO highlighting certain problems led to a site inspection by the municipal commissioner and senior officers on 5th July 2011. It was found that several cast piles were being chipped to almost a foot and a half as they had excessive heights leading to wastage of manpower, material and time. Several issues were discussed here and the contractor given clear instructions to ensure that such mistakes were not repeated.

Other communities visit the sites

Of late SA has used the construction sites as an opportunity to get community members who are still uncertain or resistant to the idea of relocating to visit the site and see for themselves the kind of housing that they would get eventually. This has often had a triggering effect on them. The first thing that most people notice is that the size of the house is much bigger than the VAMBAY houses and the quality is also much better. Also they like the design which is on a courtyard concept and helps nurture their community spirit. The fact that there is space for tying their animals and a covered parking for their cycles and two- wheelers is appreciated by one and all. They also interact with the people for whom this project is being implemented. And they come back convinced that this is going to lead to a better environment for them. The same people go back and spread the word.



women walking towards the site



“Site visit by community members of Sangalwadi. The site was shown to them by Mrs. Sharda Kamble - one of the leaders of Aba Dhotre.”