



# Siddharth Nagar, Mamurdi

## SHELTER ASSOCIATES' IMPACT



### SLUM PROFILE - SIDDHARTH NAGAR



Nr Sant Tukaram Nagar, Dehu Road, Mamurdi, Pimpri-Chinchwad, Pune



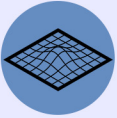
Established in 1993



Pimpri-Chinchwad Municipal Corporation -PCMC



No. of Households - 94  
89.3% are Semi- pucca while rest are kutcha.



Settlement land is Level Ground



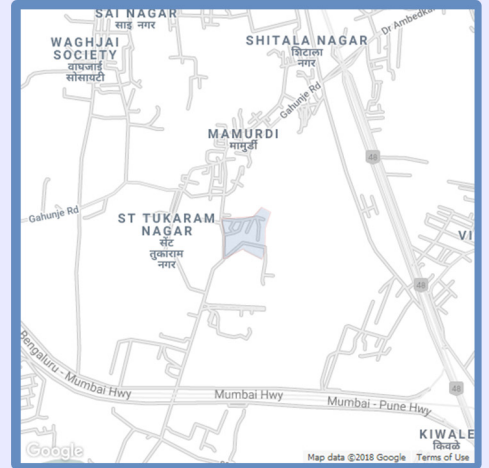
68% houses have individual water connection.



90% Hindu Mahar Community. 10% - Christians, Maratha, Muslim & Wadar Community.



AC Repairmen, Mason, Construction workers, Rickshaw pullers, Shop owners & Farm Labour



Next to Color Manufacturing Factory, Near Pune Mumbai Highway



Garbage is dumped on open grounds and road sides.

### PRE-INTERVENTION SANITATION INFRASTRUCTURE



**COMMUNITY TOILET BLOCK (CTB)**

The settlement has 1 CTB with 4 pans which was used by the women of the settlement by common consensus. Smell, Maintenance were issues.



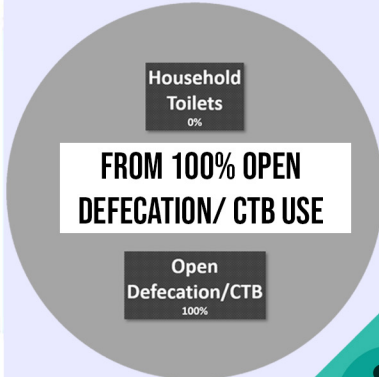
**MOBILE TOILET BLOCK (SBM)**

Under Swachh Bharat Mission , the men got a Mobile toilet block with 10 pans. They were foul-smelling, ill-maintained and had no child pans.



**OPEN DEFECTION GROUND**

Due to this most of the men and children used open ground for defecation. All of these led to severe health issues within the people of the settlement.



**BEFORE**

People couldn't built toilet as they don't have access to drainage line.

People were practicing Open Defecation or using ill-maintained CTBs which were leading to health issues

People did not have the infrastructural support or finances for making toilets.



माझ्या घरात संडास आल्या नंतर खऱ्या अर्थाने मला स्वच्छ भारत अभियानचे स्वप्न पूर्ण झाल्या सारखे वाटत आहे, कारण ज्यावेळी आम्ही बाहेर शौचालयाला जातो त्यावेळी सापांची भीती नेहमी मनात असते आणि तसेच गेलेला माणूस व्यवस्थित घरी येतो कि नाही अशी काळजी हि लागून राहते। ... आम्हाला Shelter Associates ने घरगुती शौचालय बांधून दिले त्यासाठी मी Shelter Associates टीमचा खूप आभारी आहे आणि यामुळे वस्ती स्वच्छ वाटू लागली आहे।

**DUTTA SOMNATH VIDHAATE (H. NO. 33)**

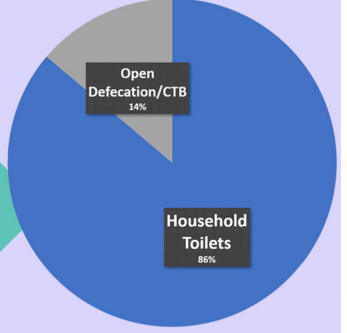
**AFTER**

PCMC has laid drainage lines for 1 km to connect toilets by SA.

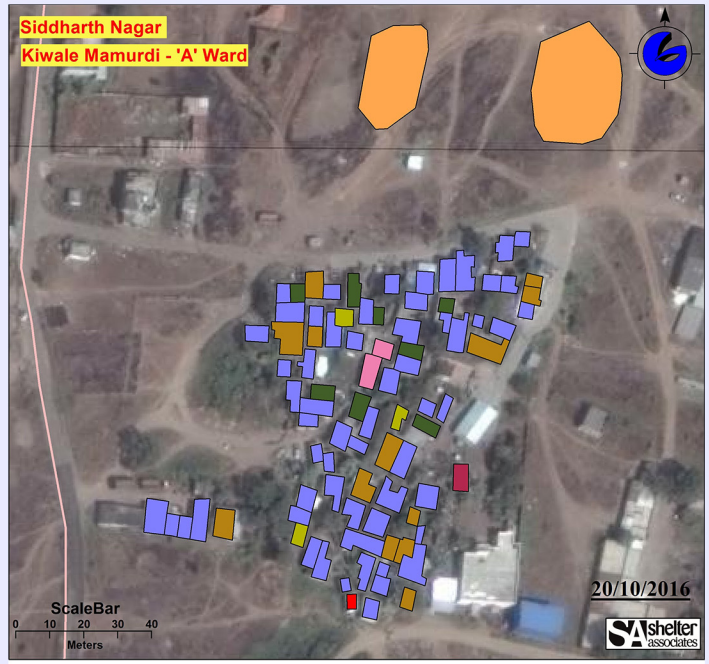
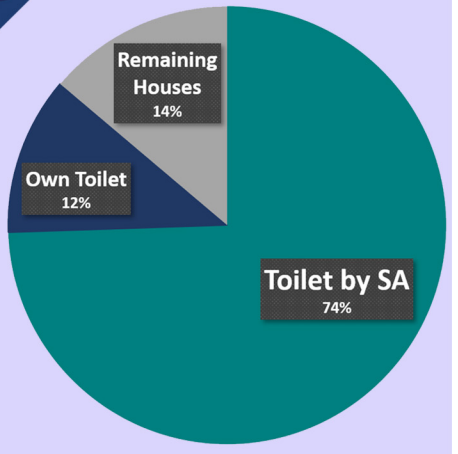
SA started intervention with CSR support: Complete building material is provided and families build toilets on their own.

A lot of the beneficiaries also upgraded their houses because of SA scheme.

**TO 14% OPEN DEFECACTION/CTB USE**

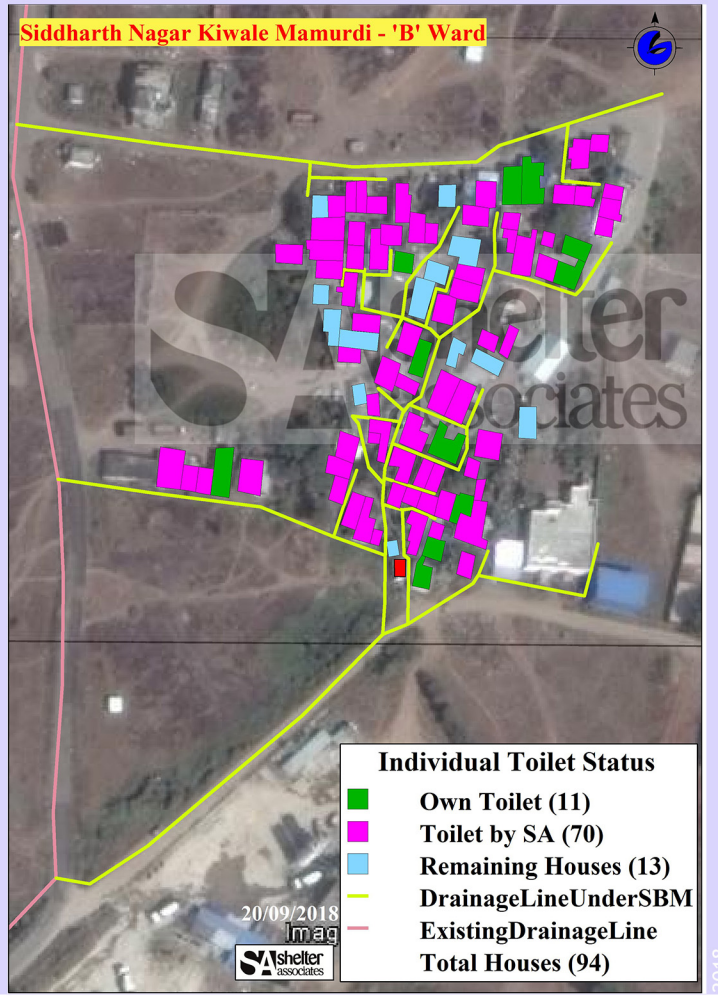


**74% HOUSEHOLDS HAVE TOILETS ENABLED BY SA**



**Current place of defecation**

- Community toilet block & Open Space (CTB) (59)
- OpenDefecationArea
- Locked house (8)
- Double house (13)
- Broken house (1)
- Permanent locked house (2)
- House Not Giving information (3)
- CommunityToiletBlock (1)
- DrainageLine
- Occupied house (59)
- Total Houses (86)



**Individual Toilet Status**

- Own Toilet (11)
- Toilet by SA (70)
- Remaining Houses (13)
- DrainageLineUnderSBM
- ExistingDrainageLine
- Total Houses (94)

**BEFORE** (20/10/2016) **AFTER** (20/09/2018)

**SIDDHARTH NAGAR - HOUSEHOLD DATA**

**SANITATION**

