

Comfort by all means.....

A case story of Sainathwadi, NMMC

“ I am glad that I can call my relatives to visit me here and they come happily to stay with us as I have a toilet at my home. I am free from all the worries. It has changed our lives”says Kavita Tapse, a 48 year old woman from Sainathwadi, Airoli ward, Navi Mumbai.

SAINATHWADI, AIROLI WARD, NMMC

Sainathwadi is a declared settlement established in 1975. Total 1075 households are residing in 38262 square meter area. Shelter Associates (SA) began the One – Home One Toilet intervention in Sainathwadi in November 2016.



CURRENT PLACE OF DEFECACTION			
Green	Own toilet [429]	Yellow line	Existing drainage line
Blue	That use CTB [537]	Brown	Unoccupied house [41]
Purple	Shared toilet [9]	Red	Community Toilet*Block [3]
Dark Green	Locked house [60]		Total houses [1076]

STEP 1

SA created Spatial Data of all **1075** households along with infrastructures mapping (Nov,16)

Coverage of sewerage network :	29%
Community Toilet Blocks :	3
Toilet seat to person Ratio :	1:75

STEP 2

Conducted 25 Community Mobilisation activities with girls, women, men and children



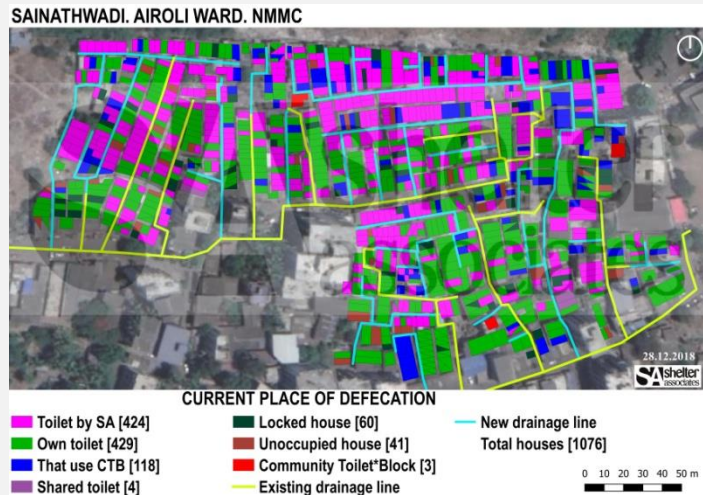
FGD with women



Awareness generation through interactive games

STEP 3

Facilitated 441 household Toilets on cost-sharing basis

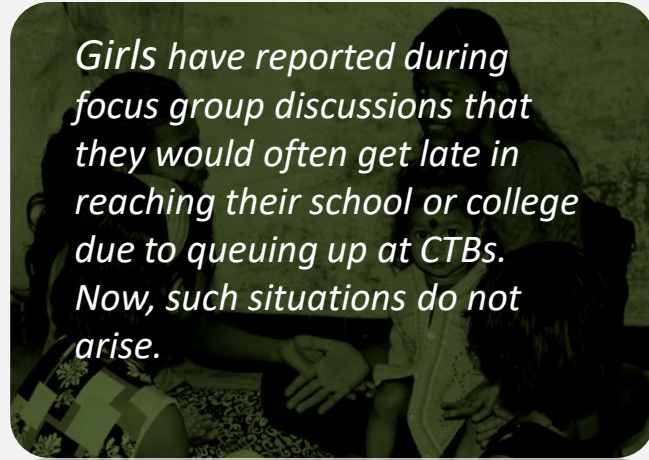
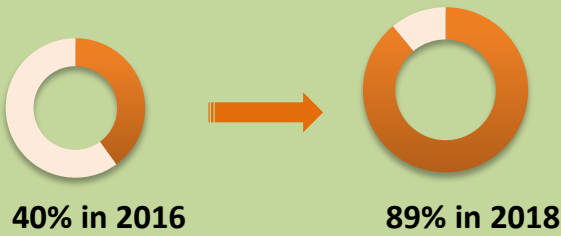


Coverage of sewerage network : **80%**
 Community Toilet Blocks : **3**
 Toilet seat to person Ratio : **1:20**

One Home – One Toilet project was initiated in November 2016, and since then it has touched upon various aspects of the settlement!

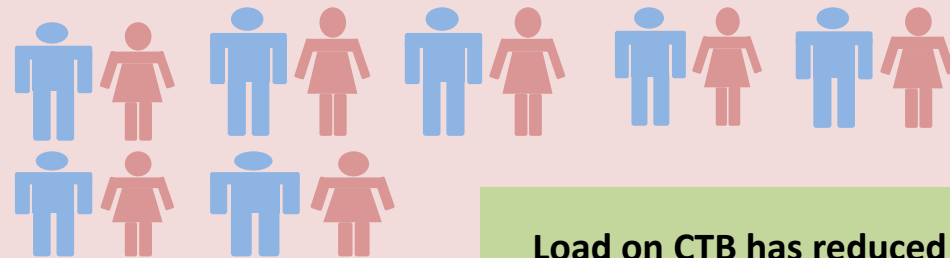
1

Girls below 18 years having a toilet at home



2

As the load on CTB has reduced, it is observed to be cleaner than what it used to be before.



Toilet seat to person ratio in CTB in 2016

1: 75

Load on CTB has reduced down to **1: 20** in 2018

3

SA's spatial data has been leveraged by ULBs to invest up to **Rs. 82.66 Lakh** towards laying additional drainage lines and/or augmenting existing drainage network.

4



Household toilet has incentivized provision of household water connections. It has risen from **32% to 64%** across the community.

5

Nearly **40%** households have renovated their houses partially or completely along with toilet construction.

