



Rapid Appraisals for city-wide slum sanitation: 'one home one toilet'

This flyer has been produced to document the process of data collection and analysis that Shelter Associates carries out as a prerequisite to planning appropriately and sensitively for the urban poor.

Data

Data provides the foundation for all of Shelter Associates projects. Slum data is methodically collected, meticulously organized using GIS, and presented using Google Earth® as a base map. The spatial organization of slum data is a prerequisite for planning appropriately and sensitively for the urban poor as it allows an accurate profile of the surveyed area, whether a city, a neighbourhood, or an individual slum, to be generated. Once an accurate profile has been created, the data is analyzed, and conclusions are drawn which formulate rehabilitation strategies. With an up-to-date and accurate data set valid theories of cause and effect can be composed where cause would be the proposed intervention and effect would be the desired result, for instance providing security of tenure, reducing open defecation, or increasing a slum family's income.

The Shelter Associates rapid appraisal survey includes the following items:

- Land ownership
- Situation and topography
- Demographics
- Development Plan reservations and zoning proposals
- Toilet, water, drainage, solid waste management and roads & access information

Slum Level Data

Slum level data is currently being collected for all eligible slums across Pune to initiate the privately funded city-wide slum sanitation project which will provide individual toilets to 1,500 slum families across the next three years (2013 - 2016). This exercise is being carried out in a sequential manner where administrative wards are surveyed one at a time.

Once the slum data for all of the eligible slums within an administrative ward is collected it is analyzed using a rating system to identify the most vulnerable slums in the area which will become the pilot slums of the project.

A key concept relating to the collection of data and the generation of an accurate city slum profile is the verification with the government engineers and the slum community.

SA collecting slum level data at an administrative ward office



Please Turn Over

Verification of Data

The slum level data is verified at the administrative ward office and on site with the engineers from the associated administrative ward office and the slum community.

This process of verification is necessary to ensure that the profile created for the slum is accurate and can be used to propose feasible sanitation interventions. By going through this process with Shelter Associates the administrative ward offices have become aware of issues of lack of formal records, especially in relation to drainage line routes, diameters, and condition and the location, size and condition of chambers.

The data collected and process of verification represents the start of formal sanitation information which will afford the administrative ward offices opportunity to plan and prioritise their own sanitation interventions.

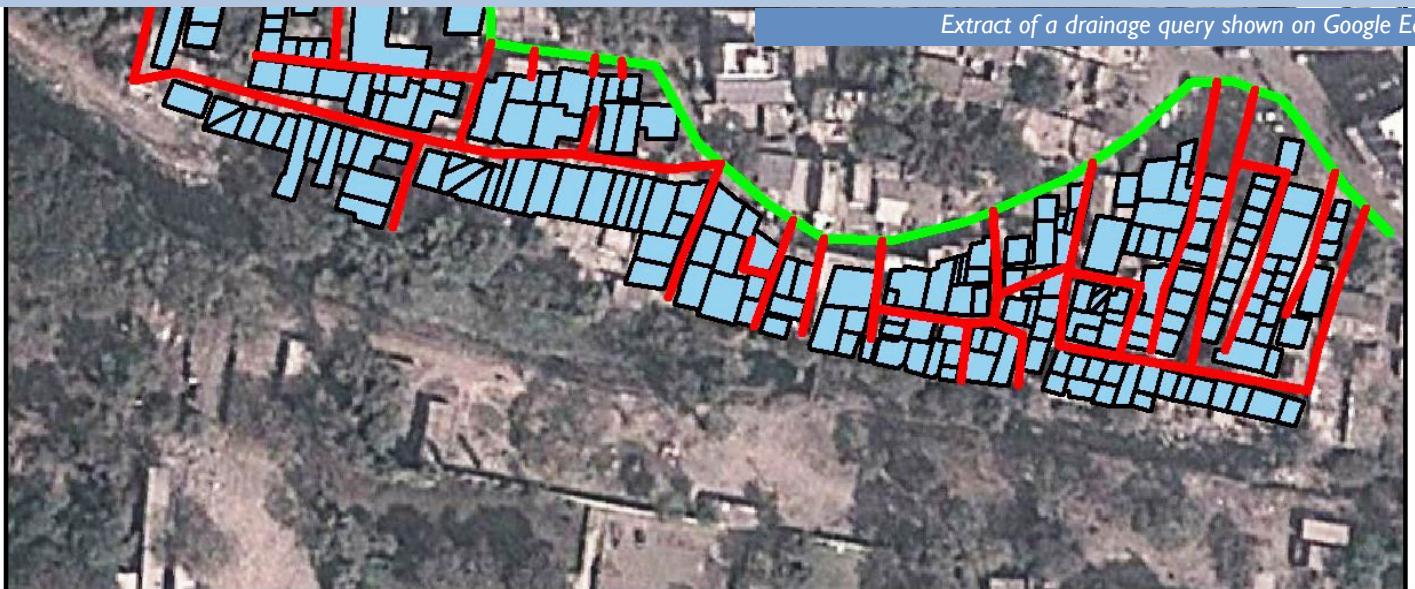
SA and a ward office engineer checking drainage in a slum



City Slum Profile & Tool Kit

All of the slum data collected as part of this city-wide slum sanitation project will be uploaded to the Shelter Associates on-line city slum profile for Pune and shared with the relevant administrative ward office as part of a tool kit which will allow them to prioritise their own sanitation spending.

Extract of a drainage query shown on Google Earth



Legend



DrainageLine10inch



DrainageLine12inch

SANITATION

