



ENHANCING THE LIVES **OF THE URBAN POOR** SINCE 3 DECADES

www.shelter-associates.org

Shelter Associates

Founded by Architects, Shelter Associates is a Civil Society Organization that uses data and technology to provide unique solutions in the sectors of Housing, Sanitation and Health since 1994 to improve the living conditions of the urban poor.



Mapping and Surveys



Sanitation (Home Toilets)



Menstrual hygiene



Social Housing



Plus Codes

The Visionary

Founded by **Arch. Pratima Joshi**, Shelter Associates is a pioneering organization dedicated to transforming slum communities.

- An Ashoka Fellow
- Recognized as a leading 'Slum Architect of India' by BBC
- The only Indian Recipient of the 'Google Earth Hero Award'
- Featured in Forbes as one of the 30 most powerful and self-made women in India.
- TEDx Pune speaker
- Featured in the UN Coffee Table Book for her achievements in the development sector



Among the various Awards & Recognitions

2023

Won Aarohan Social Innovation award for OHOT under women empowerment category

2020

Local Project Challenge Honor Award for 'One Home One Toilet'

2018

Winner of ISC-FICCI Awards 2018 for innovative use of data

2017

Winner of NASSCOM Social Innovation Forum under the Environment Category

2015

Winner of HUDCO Award for Best Practices in Sanitation (in partnership with PMC)

What We Believe

VISION



An India where every citizen has access to basic infrastructure and secure tenure, leading to equal distribution of rights.

MISSION



To empower communities living in informal settlements to pursue their right to dignity and an elevated quality of life.

CORE VALUES



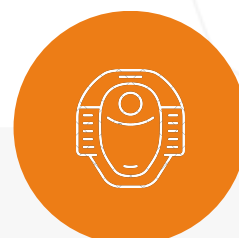
- Dignity
- Quality work
- Honesty
- Innovation
- Team work
- Collaboration

Our Outreach

Shelter Associates have impacted **190,9379** over Individuals directly and indirectly through the various interventions in Maharashtra, in the cities of Pune, Thane, Kolhapur, Navi Mumbai, Pimpri-Chinchwad, Kolhapur and more



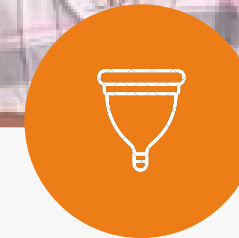
Mapped & Surveyed
3,68,594+
slum households



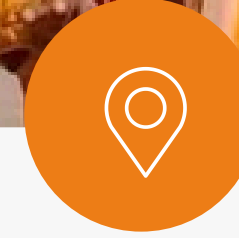
Facilitation construction of
28182+
Toilets in slum households



Impacted
9,000+
persons through slum
rehabilitation



Use of Eco friendly
menstruation by
3,000+
women and girls



Generated & assigned
1,24,328+
Plus codes for digital
addresses



Our Core Principle

SA's model of social development incorporates a comprehensive, data-driven approach to identify and address the needs of communities using spatial data.

It emphasizes the importance of multi-stakeholder engagement, bringing together government bodies, corporates, and local communities to collaborate effectively.

Additionally, the model includes a cost-sharing strategy, ensuring that all stakeholders contribute towards sustainable development.





Pioneer of data-driven poverty mapping reflecting ground realities.

- Use of Google Earth (GE) images as base maps
- Using android based systems for Infrastructure mapping & Household surveys
- Creating spatial data & integrating on GIS with Plus Codes assignment





Co-creating data with Communities and Urban Local Bodies (ULB)

- Regular meetings with Government officials and ULBs
- Validating of the spatial data by the respective ULB
- Bringing Data into Public Domain, particularly on ULB websites

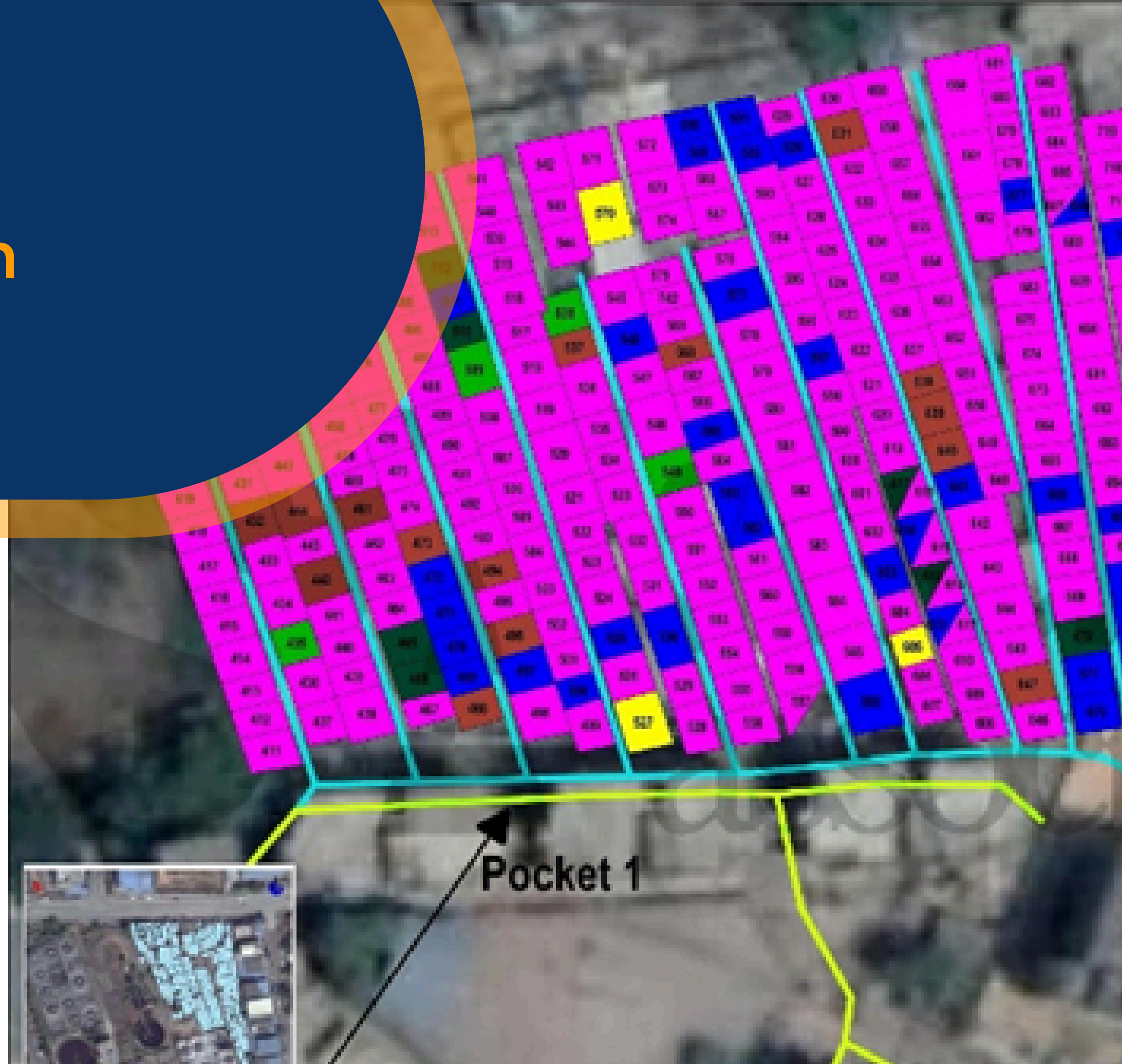


Engaging communities at every step and mobilizing them to drive behavioral change.

- Conducting regular awareness activities and meetings
- Partnering with communities through a cost sharing approach
- Regularly interacting with them to ensure long term sustainability



Our breakthrough Initiatives





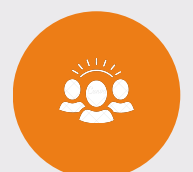
SOCIAL HOUSING

Slum Redevelopment for the urban poor

- The social housing program improves informal settlements by engaging communities in participatory planning, understand their needs & aspirations.
- Architectural expertise ensures homes are structurally sound and responsive to community requirements, facilitating access to housing benefits within government frameworks like PMAY.
- Projects like Bondre Nagar in Kolhapur illustrate a comprehensive approach, providing essential amenities and infrastructure that enhance living standards and preserve social connections, allowing for secure tenure & long-term community investment.



A total of
45+
slums redeveloped



Impacted
9000+
persons through improved housing

COMPLETED HOUSING PROJECTS



Dattawadi, Pune (1996–1998)
Single pocket of a settlement was
rehabilitated

56
Families rehabilitated



Kamgaarputala, Pune (2003–2005)
Flood affected households were
rehabilitated

176
Families rehabilitated



IHSDP, Sangli-Miraj (2009–2013))
The city-wide housing project was
initiated

3465
Families rehabilitated

BREAKTHROUGH PROJECT: BONDRE NAGAR SLUM REHABILITATION



Bondre Nagar, Kolhapur (2025)
Beneficiary led housing project

77
Families rehabilitated

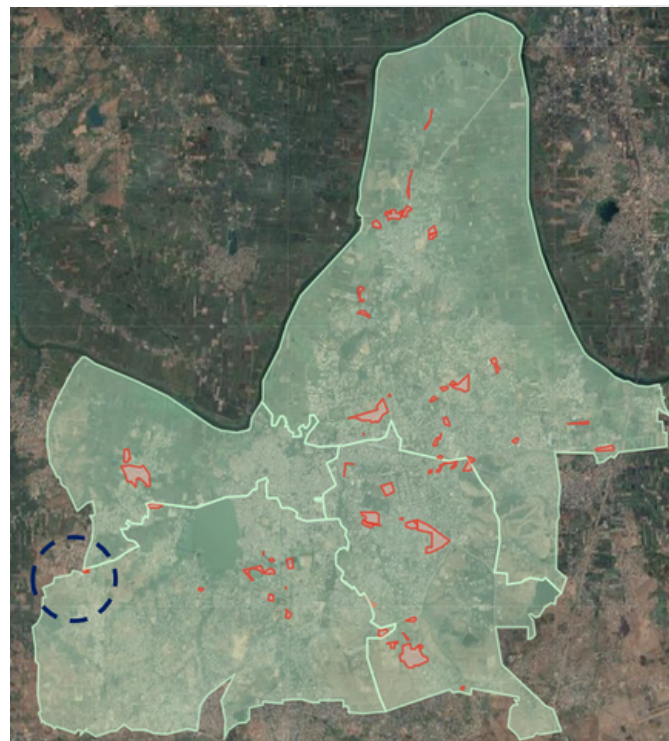
The Bondre Nagar Redevelopment project is especially significant—it is Maharashtra's first community-led, in-situ slum redevelopment under the PMAY-U's Beneficiary-Led Construction (BLC) vertical, enabling families to secure legal tenure and move into new homes without relocation.



PRE-DEVELOPEMENT OF **BONDRE NAGAR** **SLUM REHABILITATION**

A systematic step by step approach by Shelter Associates

Creating citywide
spatial data to
evaluate & plan the
project



Proposing a site
plan to the
Kolhapur ULB &
Govt authorities

Involving
communities in
the design before
finalizing the plan



Regular
meetings &
updates to ULB
till completion

Helping communities
manage the finances
through self and donor
contributions

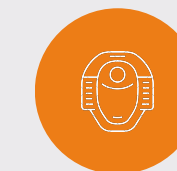




ONE HOME ONE TOILET

Individual household toilet facilitation

- Shelter Associates' One Home One Toilet (OHOT) initiative targets sanitation needs in urban slums using spatial data mapping to identify high-need areas.
- Community engagement is key, with workshops and visits educating residents on the benefits of household toilets, fostering demand, and ensuring long-term sustainability.
- The unique cost-sharing model encourages family ownership and maintenance, with a technical team ensuring quality installations and follow-up for lasting behavior change, improving sanitation access in several Maharashtra cities.



Facilitation construction of
28182+
Toilets in slum households



Planned and Conducted
2000+
OHOT awareness workshops



PLUS CODES

Navigational address codes for slum households

- The Plus Codes initiative assigns digital identities to homes & infrastructure in informal settlements lacking traditional addresses, enabling accurate location on Google Maps.
- These codes enhance access to essential services, allowing emergency responders, utilities, and e-commerce to reach previously unmapped areas.
- Community mapping exercises involve residents in assigning digital addresses, extending benefits to community infrastructure like water stands and public toilets, thereby digitizing the community within urban systems.



Generated & assigned
1,24,328+
Plus codes for digital addresses



Planned and Conducted
1500+
Plus Code awareness workshops

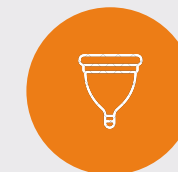


MENSTRUAL HYGIENE

Menstrual awareness among slum women

Our Menstrual Hygiene program addresses health and dignity for women in slum communities through:

- Assessment of knowledge gaps and harmful practices via interviews and discussions, including traditionally taboo subjects.
- Education-focused workshops on female anatomy, menstrual health, and hygiene, creating safe spaces for discussion & peer support around sensitive topics.
- Introduction of eco-friendly menstrual products to alleviate financial burdens and minimize waste, along with follow-up sessions to promote sustainable behavior change.



Use of Eco friendly menstruation by

3,000+
women and girls



Planned and Conducted

500+
menstrual awareness workshops



Maruti Rajaram Saponishi

Sambhaji Nagar, Pune

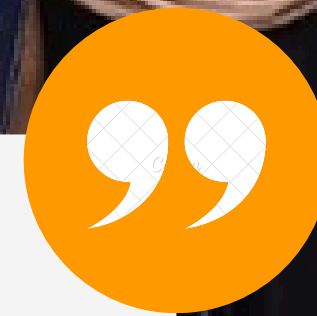
"I received the toilet for my home, and I'm extremely satisfied and relieved. As someone with a disability, this toilet has been a great blessing."



Bhikaji Wayadande

Bondre Nagar, Kolhapur

"Our dream home is finally complete. Building this house was not easy, but now it's done, and we are so proud. Recently, the water supply started working, and this has made us even happier."



Governing Body



Arun Kadekodi
President



Pratima Joshi
Founder/Secretary



Supriya Vaidya
Treasurer



Dr. Nirmala Pandit
Governing Body member



Vishal Jain
Governing Body member



Ashwin Trimal
Treasurer



Vaishali Bhagwat
Governing Body member



Manas Rath
Governing Body member

Partners & Funders

BANK OF AMERICA

FANUC



HDFC
Life

CHINTU GUDIYA
FOUNDATION



YARDI

ELANTAS

@t@e
CHANDRA
FOUNDATION

TATA TRUSTS

DMI FINANCE



Friends of Shelter Associates
Build Toilets, Save Lives



Google

unicef

dasra



shelter associates



www.shelter-associates.com

+91 80876 07545

info@shelter-associates.org