



Facilitation of Good Hygiene & Essentials Food Grains #IndiaFightsCorona

Shelter Associates have undertaken various awareness & relief campaigns to ease the spread of Covid19 and bring much relief to the slum families who receive minimal help at the time of such a crisis. **Through a strong granular data on slum communities and families residing there, Shelter Associates have collated a list of vulnerable slum families that require immediate relief. With the help of external funding, a dedicated field team of community workers and a network of trained volunteers from the community, we have strategised the following:**

- **Distribution of Hygiene kits comprising of Hand Wash (450gms), Floor Cleaner (Phenyl) (1 ltr), Soap (3nos) and Face Mask (5 nos).**
 - **Distribution of essential food grains comprising of rice (5kg), wheat (5kg), tur dal (1kg), masoor dal (1kg) and cooking oil (1 ltr).**
- in the slum communities of Kolhapur, Miraj, Thane, Panvel and Pune

KOLHAPUR, MAHARASTRA

Shelter Associates has been implementing the 'One Home One Toilet' initiative in Kolhapur since the year 2016. Having mapped 53 slum settlements and surveyed over 14000 slum households, SA has been working jointly with the Kolhapur Municipal Corporation and the slum communities to facilitate safe sanitation to the slum dwellers. Around 3300 individual household toilets have been facilitated so far.

Hygiene kits distributed to **850** families in 18 slums of Kolhapur. In Miraj, Shelter Associates distributed dry ration to 20 slum families

Why have we chosen these families???



Poor living condition
in the slums



Low economic
status of families



Families dependent
on daily wages



Households inhabited mostly by
disabled persons, widows & the elderly

ACTIVE INVOLVEMENT OF KOLHAPUR MUNICIPAL CORPORATION

The Kolhapur Municipal Corporation has always been very supportive and during the time of this pandemic, the concerned officials immediately issued a letter for the distribution of Hygiene Kits in the settlements and were personally involved in the distribution. The Municipal Commissioner commended Shelter Associates on the relief work being conducted and assured additional help whenever required. Also, a lot of help has been received from the social workers of the respective areas who were familiar with the toilet facilitation work of Shelter Associates and were more than pleased to witness the efforts of the organisation in facilitating personal and public hygiene during such a challenging situation. They also helped in the selection of vulnerable families for the distribution.



SANITATION

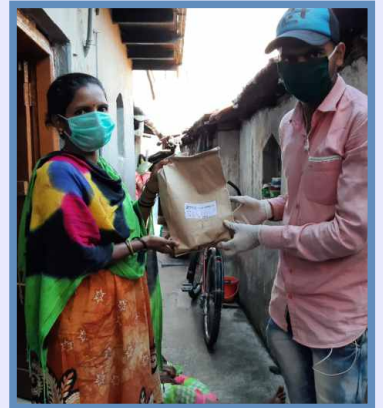


©copyright Shelter Associates
For more information, please visit our website:
www.shelter-associates.org



Facilitation of Good Hygiene & Essentials Food Grains

#IndiaFightsCorona

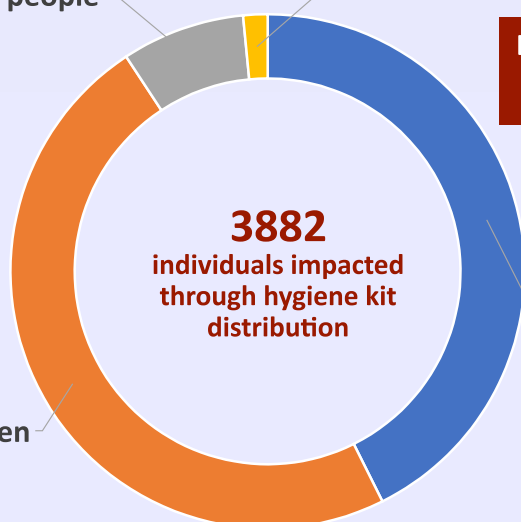


39 Volunteers
12 male & 27 female volunteers actively involved in the Covid19 relief project

4956 Individuals
2657 male & 2299 female individuals impacted through Covid19 related awareness calls in 2451 Households in 18 slums of Kolhapur

301 Elderly people 59 disabled persons

DRY RATION KIT DISTRIBUTION
Impacted 83 individuals by the distribution of 20 dry ration kits in Miraj



Conducted from 22nd to 25th April 2020

SANITATION



Copyright Shelter Associates
For more information, please visit our website:
www.shelter-associates.org



Facilitation of Good Hygiene & Essentials Food Grains #IndiaFightsCorona

THANE, MAHARASHTRA

Shelter Associates entered the city of Thane in 2017 and mapped 27 slum settlements while over 44000 slum households were surveyed through which a granular data on the slum households have been collated. Till date, 2350 individual household toilets have been facilitated in selected slums of Thane.

Distributed 150 hygiene kits to the Police and Cleanliness workers of Lokmanya Nagar and Slum residents of Shivkrupa Nagar in Thane, Maharashtra

Why have we chosen these families???



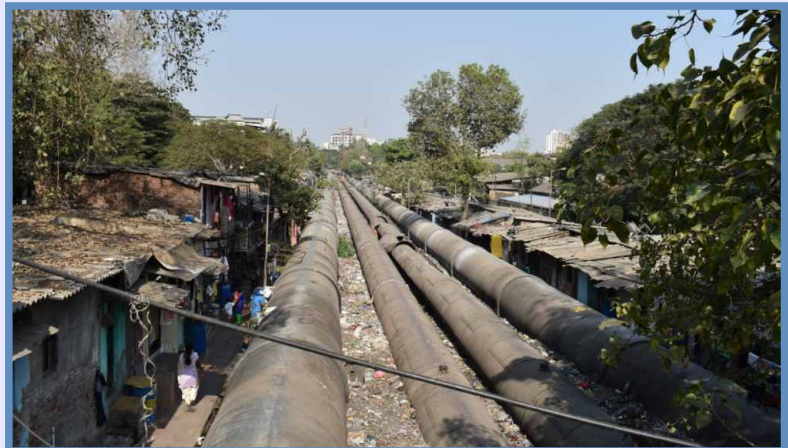
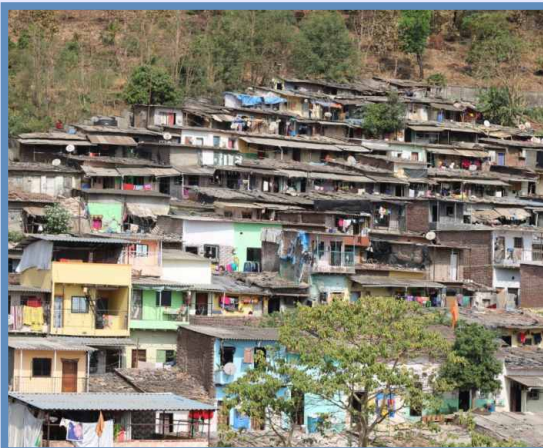
Lokmanya Nagar

Inhabited by a majority of women working as cleanliness workers and garbage collectors. With the environment they stay in, maintaining hygienic conditions becomes very essential.



Shivkrupa Nagar

This settlement houses residents who sell scrap metal which are collected from garbage. Also it's a bigger risk as Covid19 has been detected in the neighbouring slum settlement of Hazuri Vasti.



SANITATION



©copyright Shelter Associates
For more information, please visit our website:
www.shelter-associates.org



Facilitation of Good Hygiene & Essentials Food Grains

#IndiaFightsCorona



26 Volunteers
19 male & 17 female volunteers actively involved in the Covid19 relief project

6453 Individuals
3403 male & 3050 female individuals impacted through Covid19 related awareness calls in 3362 Households in 7 slums in Thane

जिल्हा टाईम्स **ठाणे जिल्हा**
शेल्टर असोसिएट्स व राणी तारामती बचत गट यांच्या संयुक्त विद्यमानाने ५० कचरा वेचक, सफाई कामगारांना हायजनीक किट वाटप

जिल्हा टाईम्स - ठाणे, दि. २९ - लोकमान्य नगर ठाणे येथे शेल्टर असोसिएट्स व राणी तारामती बचत गट यांच्या संयुक्त विद्यमानाने पारंपारिक ५० कचरा वेचक व सफाई कामगार यांना हायजनीक किट वाटपला आहे. त्याच काळात पाचपुर्वीस शहराच्या सफाई वेळापत्राचे काम व वायव्येवर शहराच्या आरोग्य प्रशासनाचे काम हे सफाई कामगार व कचरावेचक करत आहेत. त्यांचे आयकवळ वाढविण्यासाठी तसेच त्यांचे आरोग्य वाढवणे याचे वास्तवी संस्थेच्यातून त्यांना हायजनीक किट देण्यात आले. या किटमध्ये साबण, किट वॉश, सॅनिटाइझर, मास्क, फिनॉल टुवॉशचा समावेश आहे.

शेल्टर असोसिएट्स नेत्या ३ वर्षांपासून ठाणे महानगरपालिकेसोबत सोसायटीच्या माध्यमातून शौचालय बांधण्याचे काम करते. शेल्टर संस्था हायजनीक गतिशील व महानगरपालिका या विभागातून साधनांचे सहाय्य शौचालयांचे बांधकाम करते. यात सध्या शौचालयांचे बांधकाम सुरु आहे.

असोसिएट्सने सुमारे १८ हजारपेक्षा अधिक शौचालय बांधण्यात आले आहेत. यामध्ये टायमर नगी मुंबई, पनवेल, पुणे पिंपरी-चिंचवड, कोल्हापूर व सांगली असे शहरांचा समावेश आहे. शेल्टर असोसिएट्स ने 'एक घर एक शौचालय' या संकल्पनेतून सुमारे ३ लाख ३० हजार लष्करीपणे कार्य पाहिलेले आहे. लोकसभेच्यातून शौचालय व घर या मुल्यवत शुकिया जबाबदारींना मिळवण्यात या उद्देशाने शेल्टर असोसिएट्स या संस्थेची संस्थेची स्थापना करण्यात आले.

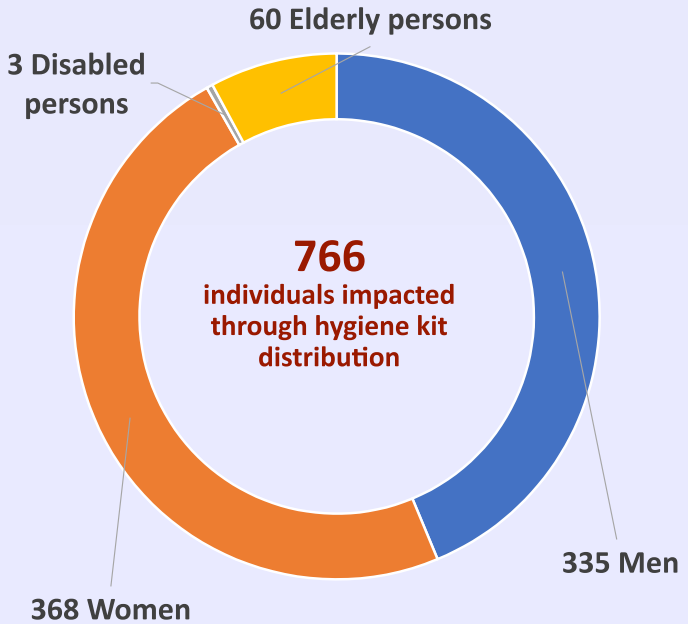
शौचालय संस्था वस्तीतील जागीरकोटरीत वेगवेगळ्या विभागांवर जनजागृती कार्यक्रम राबविले असते. यामध्ये अनेक-सूत्र कचरा व्यवस्थापन, सार्वजनिक आरोग्य, सधेचे रोग तसेच महाप्राणिकेच्या समाज विकास विभागाच्या वेगवेगळ्या कक्षावारी योजनांची माहिती वस्तीतील जागीरकोटरीत पोहोचण्याचे काम करते.

कोटरी शेल्टर असोसिएट्सने टिन शीटर तैयार करते. टिन शीटर वस्तीत विविध अन्न जतनात व समाजसेवाक उपाय दिवतप केऱेले व उर्वरित तैयार.

बोधकाळ्याचे माहिती मोठ्या देणे, वस्तीतील लोक स्वतःकडील घरे खालून ते शौचालय बांधून घेतात व महानगरपालिकेच्यावतीने ते शौचालय मरलनिमसप चाळिलेले आहेत देण्यात येते. या सर्व शौचालयांची नेट ठाणे महानगरपालिकेच्या स्वच्छ भारत अभियानामध्ये करण्यात येते.

महाराष्ट्र राज्यातील विविध शहरांमध्ये शेल्टर

Press Note in Jilha Times, Thane



Conducted from 30th May to 2nd June 2020

SANITATION



Copyright Shelter Associates
For more information, please visit our website:
www.shelter-associates.org



Facilitation of Good Hygiene & Essentials Food Grains #IndiaFightsCorona

PANVEL, MAHARASHTRA

Slum mapping and household surveys in the city of Panvel was started by Shelter Associates in the year 2018. With active support of the Urban local body and slum communities, SA has been successful in gathering the data of 8547 households in 54 slum settlements. So far, 226 individual household toilets have been facilitated.

Distributed hygiene kits to total 550 slum families of Panchsheel Nagar and Bhim Nagar at Panvel, Maharashtra

Why have we chosen these families???

Panchsheel Nagar



Located amidst the railway station & road, residents face constant risk of slum demolishment by either CIDCO or the Railways



It is a dense settlement having no facility of water, internal roads, drainage and toilet coverage.



Many are daily wage earners & are survived by the grocery provided by local councillors or other NGOs.



Majority still use Community toilet or defecate in the open giving rise to unhygienic habits & inviting illnesses

Bhim Nagar



With 66 families residing at Bhim Nagar, all the slum dwellers stay in kutchha houses that are made up of tin sheds. The vulnerability of the slum households is similar to those of Panchsheel Nagar



SANITATION



©copyright Shelter Associates
For more information, please visit our website:
www.shelter-associates.org



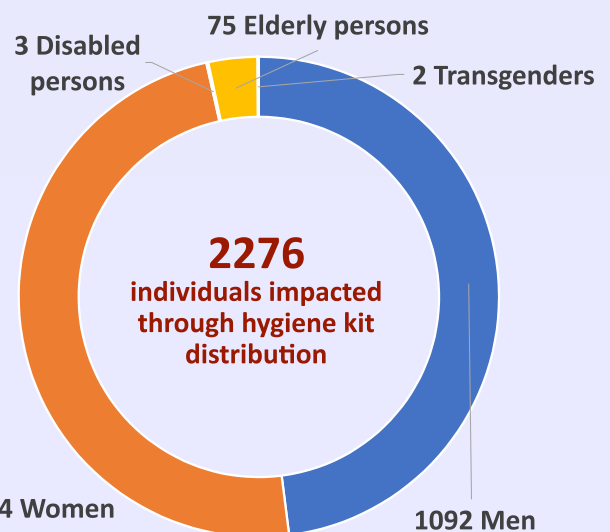
Facilitation of Good Hygiene & Essentials Food Grains

#IndiaFightsCorona



7 Volunteers
5 male & 2 female volunteers actively involved in the Covid19 relief project

1161 Individuals
604 male & 557 female individuals impacted through Covid19 related awareness calls in 496 households of 18 slums of Panvel



Conducted from 27th May to 2nd June 2020

SANITATION



Copyright Shelter Associates
For more information, please visit our website:
www.shelter-associates.org



Facilitation of Good Hygiene & Essentials Food Grains #IndiaFightsCorona

PUNE, MAHARASHTRA

Pune has been the initial cities where Shelter Associates has intervened. The data journey of Shelter Associates started with Pune with 1,25,000 individual households being mapped in 241 slums of Pune. With a very inclusive approach through the 'One Home One Toilet' model, SA has been successful in facilitating 4776 individual household toilets and elevating the lives of over 23000 slum dwellers of Pune city.

Distribution of hygiene kits to 600 families in 8 slums and dry ration kits to 430 families in 3 slums of Pune. Some ration kits were shared with 'Sevadeep' NGO as they faced food grain shortage for community distribution at Pimpri-Chinchwad.

Dry Ration Kit contents:

5kg Rice+5kg Wheat+1kg Turdal+1kg Masoor dal+1 litre Cooking oil

Why have we chosen these families???



The selected slums houses migrant labour who work as masons, housemaids, construction labour, etc. who have lost their jobs due to the lockdown



Most of the houses are made up to tin sheets and having no proper water connection that often leads to unhygienic conditions for the family



Slums such as Shinde & Devkar vasti are located on a private land with no basic amenities such as water, drainage, etc.



Families have to struggle for a one time meal as their work has hampered due to the lockdown. They are even unable to feed their children.



Inhabitants of some settlements such as Sambhaji nagar belong to the denotified tribes and usually work for the unorganised sector. They earn a living by selling smaller items on the roadside or traffic signals, etc. Along with the organised sector, this sector too have suffered a major setback. Having lost their regular work due to the lockdown, these communities are left with no other source of income and end up begging or being left on the mercy of Government or social organisations for fulfilling their basic necessities.



SANITATION



©copyright Shelter Associates

For more information, please visit our website:

www.shelter-associates.org



Facilitation of Good Hygiene & Essentials Food Grains #IndiaFightsCorona

PUNE, MAHARASHTRA

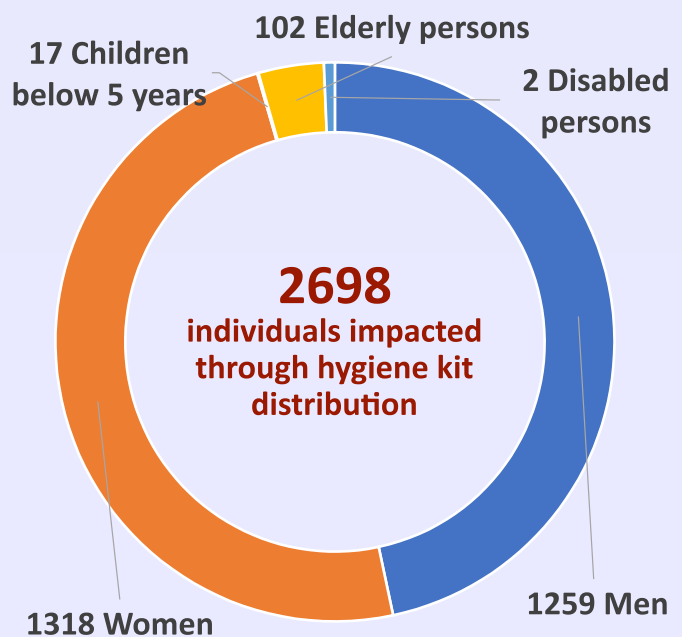


DRY RATION KIT DISTRIBUTION

Impacted 2091 individuals through the distribution of 430 dry ration kits in Pune and through Sevadeep NGO

54 Volunteers
33 male & 21 female volunteers actively involved in the Covid19 relief project

3431 Individuals
1887 male & 1544 female individuals impacted through Covid19 related awareness calls in 2175 Households in 14 slums of Pune



Ongoing project started on 1st May 2020

SANITATION

