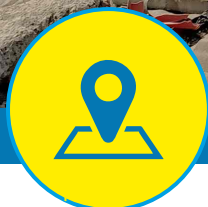


**EXPLORING NEW  
HORIZONS!**



▶ Data



▶ Plus Codes



▶ Sanitation



▶ Housing



# ANNUAL REPORT 2022-23

+91 99224 48390

info@shelter-associates.org

www.shelter-associates.org

## EXECUTIVE DIRECTOR'S NOTE



It gives me immense pleasure to present to you our Annual Report for FY 2022-23. I am particularly excited about the new initiatives and projects that we undertook this year. After years of being experts in Data mapping and Sanitation for urban poor, we have also decided to help like minded organization in their data journey. Since we believe that the social sector has worked in silos for too long and after braving major upheavals in recent times, our sector should unite and help each other to create a holistic impact for improving the lives of the underprivileged.

This year, the most exciting achievement was the commencement of construction of our Bondre Nagar slum redevelopment project.

We also saw that our Plus Codes initiative through which we are improving the accessibility of essential services in slums has gathered the interest of many organizations and ULBs. We are also particularly encouraged that we are able to truly empower the slum women by showing them the way to better menstrual hygiene and health.

We owe our success to all our well wishers, donors, government officers, elected members and of course the many communities for their unflinching trust and support. I specially want to mention the role of our community volunteers who served the communities right till the fag end of Covid. The letter of appreciation from the Prime Minister of India is a testament to their efforts at the frontline.

I would also take this opportunity to thank the board members and all my colleagues for their immense faith, handwork and perseverance that kept us going in the worst of times.. As we are about to complete 30 years, we are filled with new hopes and confidence that we shall continue serving the underserved with the same passion. Towards the next 30!

**Pratima Joshi**

Executive Director

### MESSAGE FROM THE BOARD

“As a techie at heart what excites me is that we are able to use open-source platforms like GIS that helps us make informed decisions based on the analysis made using various digital tools. The cause of uplifting the slum dwellers is close to our hearts and we are constantly innovating to find new impactful solutions to social problems”.

**Arun Kadekodi**  
Board President - SA

1

Shelter Associates - Then and Now

2

Highlights of the year 2022-23

3

Governing Body Members

4

Projects Implemented

- ..... Data Mapping & GIS
- ..... Plus Codes - A Digital Address
- ..... Sanitation & Hygiene
- ..... Menstrual Hygiene
- ..... Social Housing

5

Community Mobilization

6

In the News

7

Financials

8

Stories from the Ground

9

Volunteering Experiences & Opportunity

10

Thanking our Partners



# SHELTER ASSOCIATES - THEN & NOW



Shelter Associates is a Civil Society Organization (CSO) established in 1993 to improve the living conditions of the urban poor in India. We work in slums and informal settlements to Provide technical support for, and facilitate access to, improved housing and essential services.

The Core Purpose of the organisation is to 'Enhance the Quality of Life'.



**Vision**

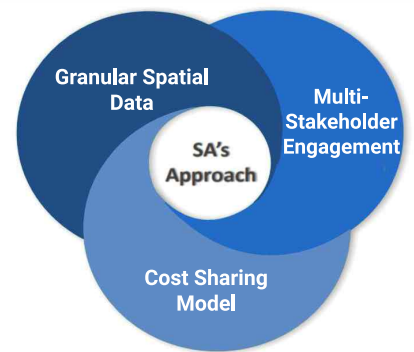
An India where every citizen has access to basic infrastructure and secure tenure, leading to equal distribution of rights.



**Mission**

To empower communities living in informal settlements to pursue their right to dignity and an elevated quality of life.

## SA's Approach



**Core Values**

**Dignity:**  
We nurture respectful relationships

**Honesty:**  
We seek, present & abide by the truth

**Teamwork & Collaboration:**  
We believe in working together

**Quality Work**  
We exceed expectations, ensure sustainable outcomes

**Innovation:**  
We find new ways to serve better

**Transparency:**  
We ensure trust is maintained at all level

## Shelter Associates Team

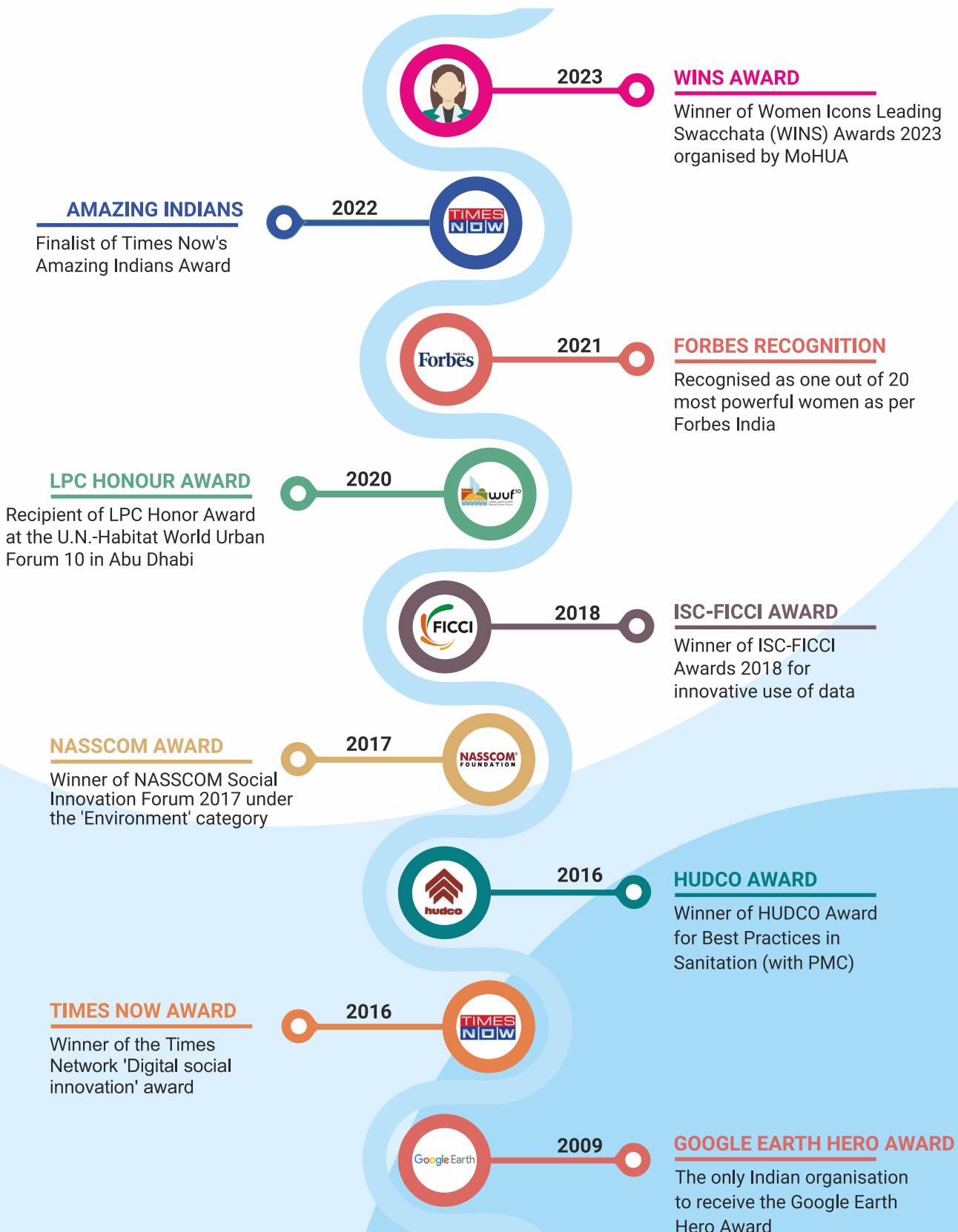




# SHELTER ASSOCIATES - THEN & NOW



With a strong belief in a data driven approach and a significant emphasis on sanitation, housing and overall well-being of the urban poor, we are proud of being honoured at National and International Forums. Some of the prestigious awards and recognitions received by Shelter Associates are mentioned below:



# HIGHLIGHTS OF YEAR 2022-23



As we complete nearly 30 years, we look back at our journey with pride. In 2022-23, we truly took a leap and ventured out of our home state of Maharashtra to map Saharanpur, a town in Uttar Pradesh state. We have also started collaborating with other NGOs to train and support them to adopt spatial data for planning and monitoring social impact projects. We are also encouraged by the appreciation received for our solid waste management and eco-friendly menstrual hygiene projects.

## IMPACT FIGURES FROM 1994 TO 2023

**9500**

Out of **3,10,000**

**Rapid Infrastructure Mapping & Rapid Household Surveys in Slums**

**1309**

Out of **26,519**

**HH toilets facilitated in Pune, Pimpri-Chinchwad, Navi Mumbai & Thane,**

**18700**

Out of **66,500**

**Plus Codes provided to the Slum HHs in 4 cities of Maharashtra**

**5 Lakh+**

Out of **15 Lakh+**

**Total lives impacted (Data, sanitation, housing and other projects)**

### BONDRE NAGAR SLUM REDEVELOPMENT

Our live Slum Redevelopment project at Bondre Nagar Kolhapur was off to a great start. With the land transferred in the name of the beneficiaries and all approvals attained from the Govt, the community has shifted to transit camps after demolishing their old houses. The construction has commenced and is completed up to the plinth level.

### DEEPER ENGAGEMENT WITH THE COMMUNITY

This year we deepened our engagement with the various communities by conducting a variety of activities such as mental health workshops, save soil campaign, health camps, new board games and fun gatherings. We are happy with the response received from the community and hope to continue these activities in the coming years

### MAPPING BEYOND MAHARASHTRA

This year, we truly ventured out of our home state to map the town of Saharanpur in Uttar Pradesh state. We have also started collaborating with other NGOs to train and support them to adopt spatial data for planning and monitoring social impact projects. With these collaborations we are taking bold steps towards data institutionalization.

### TOWARDS SUSTAINABLE SANITATION

We stepped up our efforts to create a holistic impact in improving the sanitation status in slums by undertaking massive campaigns to create awareness on solid waste management in Navi Mumbai. In Thane, our menstrual hygiene project was much appreciated by women while our One Home One Toilet project was supported by new donors like CEdge.

# GOVERNING BODY MEMBERS



**Arun Kadekodi**, President

An M.Tech in Computer Science and the co-founder and CEO of Soft Corner, a software product and services firm. He is an active member of the Computer Society of India.



**Pratima Joshi**, Secretary

Masters in Architecture and the Co-founder of Shelter Associates. She is an Aga Khan Scholar and recipient of the prestigious 'Google Earth Hero' honour.



**Supriya Vaidya**, Treasurer

A graduate in home science graduate and education, Supriya was in the teaching profession for several years. She is one of the founder directors of Noble Agro-Vet Ltd.



**Snehalata Shrikhande**, Member

A graduate in psychology and economics and post-graduate in sociology, Lata has been involved in environmental campaigns in Pune since the 1980s.



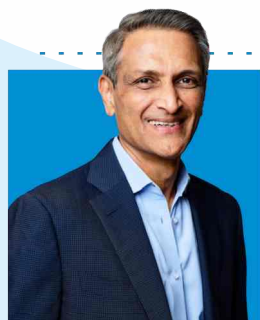
**Nirmala Pandit**, Member

She has a doctorate in human rights & taught Human Rights & International Law in the post-graduate department of law at the University of Pune.



**Ashwin Trimal**, Member

A B.Sc, MBA and Founder Director of real estate development company TruSpace. Also responsible for development of premium residential & commercial projects in Pune.



**Vishal Jain**, Member

A graduate in electrical engineering & post-graduate in management, he is the co-founder of DP Coalition & a trustee of PROOF. He is also involved in various urban issues for the poor.



**Vaishali Bhagwat**, Member

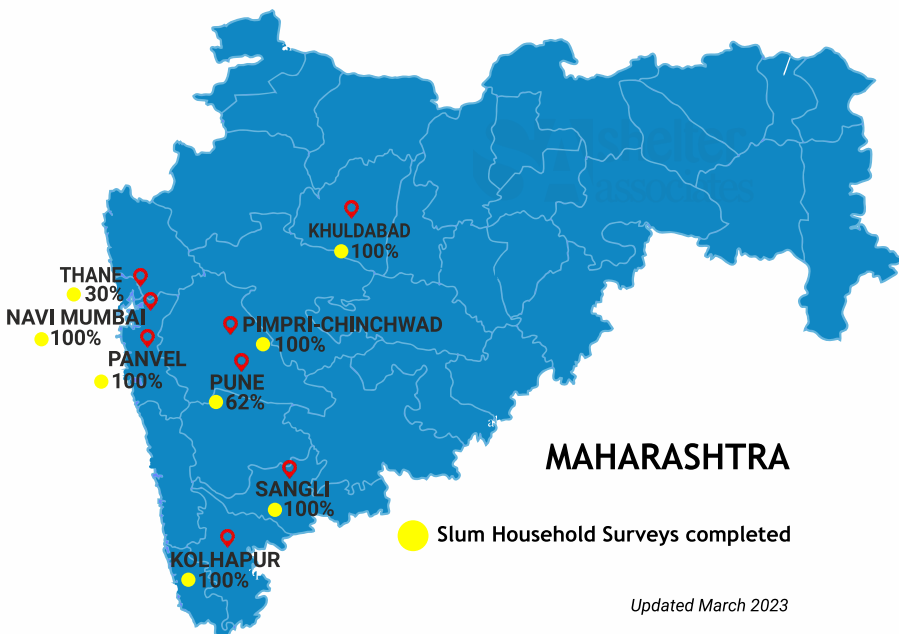
A Post Graduate from Cranfield University UK, she is a practicing lawyer with 22 years of experience in litigation and advisory practice in Pune and Mumbai.





Photo: Placing logo on toilet facilitated by Shelter Associates

SA pioneered the use of Geographic Information System (GIS) technology & Google Earth in the late 90's for spatially mapping poverty using an android application called AVNI and other open source GIS softwares. This data is regularly updated on a web-based platform to allow for real time monitoring of slums on a city-wide level. The information thus created is finally used to determine the gaps in delivery of sanitation, improving accessibility of slum dwellers to essential services and for developing slum rehabilitation solutions based on slum vulnerability and resource allocation for the same. It also helps ULBs make required budgetary provisions. 3,10,000+ households have been mapped and surveyed till date in 650 informal settlements.



CITY	Hhs SURVEYED (2022-23)
Pune	5000+
Navi Mumbai	8000+
Thane	1500+
Saharanpur	3900+

No. of Slum HHs Mapped & Surveyed in 2022-23

# 9500+

2022-23



**Uttar Pradesh**

## Mapping beyond Maharashtra

This year we also ventured beyond Maharashtra to map civic infrastructure in a town called **Saharanpur in Uttar Pradesh**. The funder of the project aims to improve the civic infrastructure for the town mainly inhabited by skilled wood craftsmen.

**3,900+ structures were mapped**



Total Slums Mapped till date

**650**

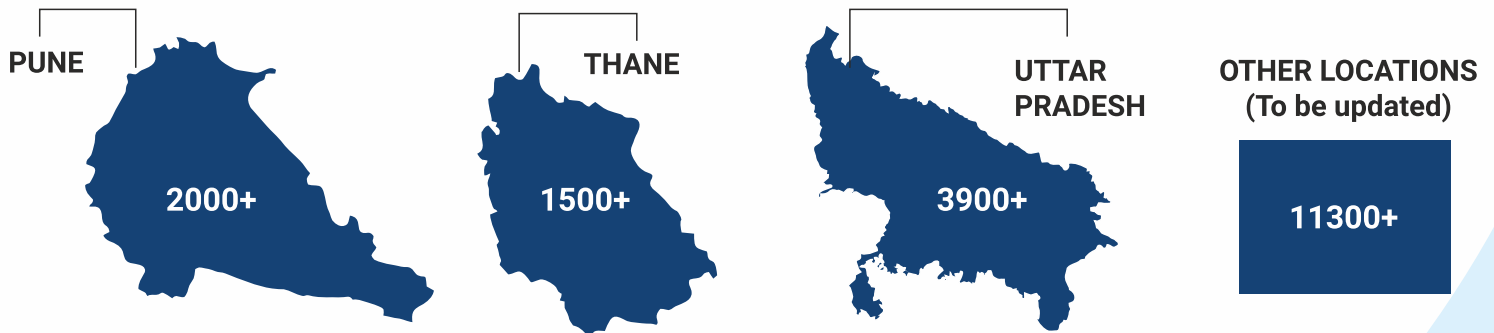
% of Slum Household Mapped & Surveyed till date

**90%**

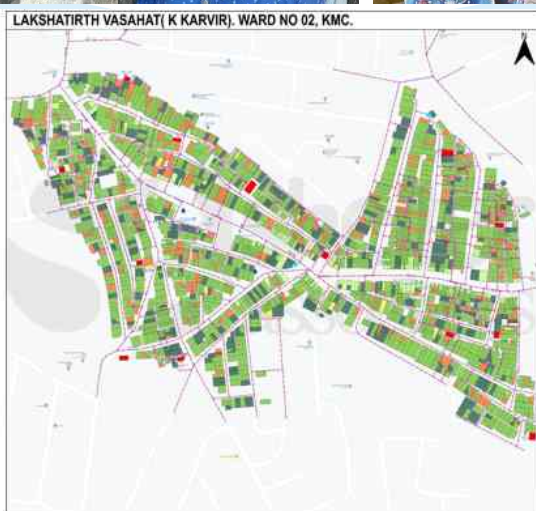


# PLUS CODES - A DIGITAL ADDRESS

Plus Code (PC) is a unique digital locational address given to every location on earth. Shelter Associates generates and assigns these PC to slum households and critical infrastructure. Linked to our granular spatial data, PCs help improve accessibility to basic services. PC is navigable through Google Maps and allows slum residents to access services such as postal, emergency services, gas cylinders & other online services. In addition to that, the WASH infrastructure facilities with the slum such as Community Toilets, Manholes, Drainage Chambers, Water standposts, etc. can be located easily. City Municipal Corporations will be able to provide basic facilities like water, sanitation, waste management, electricity, etc. to every household accurately. 66,000+ Plus Codes have been generated so far in the informal settlements of 5 cities of Maharashtra.



TOTAL **18700+** PLUS CODES GENERATED in 2022-23



←

Plus Codes

- Green square: - HH having water meter connection
- Orange square: - HH not having water meter connection
- Red square: - CTBs

This year, KMC integrated our granular spatial data linked with PC with their system to map and identify the penetration of water meters in a selected slum namely Lakshatirth Vasahat in Kolhapur. This is helping them track and monitor the water meters and to reach out to specific household to solve issues effectively.

2022-23



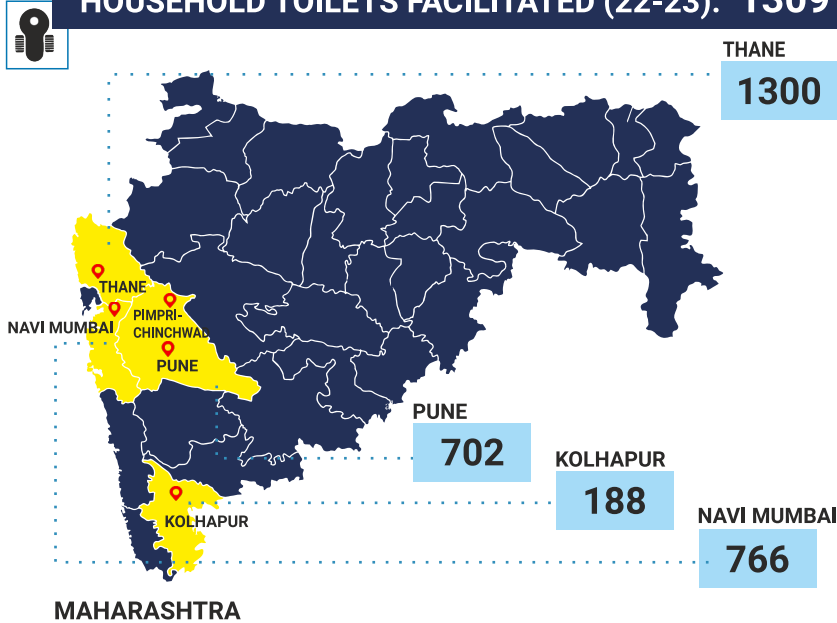


# SANITATION AND HYGIENE



This year we have stepped up our efforts towards creating a more holistic sanitation impact. Along with building household toilets through our 'One Home One Toilet', we ran massive campaigns with NMMC creating awareness on solid waste management amongst the citizens. We also conducted many educational and fun activities to create a behavioural change in the communities towards sanitation and hygiene through various mobilization activities. Beneficiaries belong to the informal settlements of Pune, Thane, Kolhapur, Navi- Mumbai, Pimpri-Chinchwad, Sangli & Panvel. **26,000+** Household Toilets have been facilitated till date impacting over 4 lakh individuals.

## HOUSEHOLD TOILETS FACILITATED (22-23): 1309



## DRAINAGE STATUS IN PROJECT SETTLEMENTS

CITY (Maharashtra)	DRAINAGE% RISE (In project slums)
Pimpri-Chinchwad	From 37% to 68%
Kolhapur	From 23% to 37%
Navi Mumbai	From 13% to 46%
Thane	From 17% to 33%
Panvel	From 16% to 47%



Investment by ULB on Drainage **4686 Lakhs**



Persons impacted directly & indirectly through sanitation solutions (22-23): **30000+**

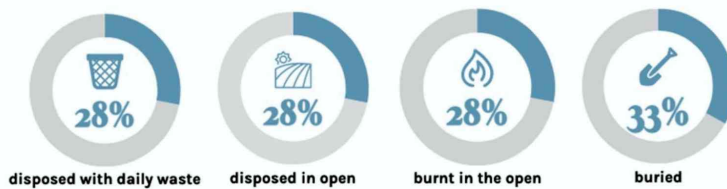


2022-23



Modern-day disposal pads are toxic, non-biodegradable, that ultimately clog our landfills for decades while the Lack of affordable menstrual hygiene products adds to the financial woes of underprivileged women. To address twin problems of environmental degradation and period poverty, we educate women and adolescent girls regarding the importance of menstrual hygiene, the hazards of disposable pads on women’s health, and the environment. We urge the use of eco-friendly sanitary products like menstrual cups and cloth pads. Women form groups and discuss their experiences during menstruation and encourage each other to adopt suggested eco-friendly sanitation products. This program is helping underprivileged slum women and girls to change the conservative attitudes around menstruation.

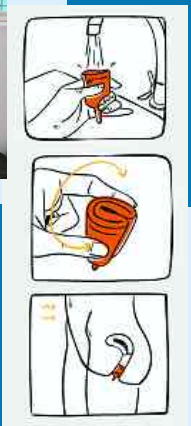
### Where are the sanitary pads disposed?



Even talking about menstruation is taboo for some slum communities hence it was critical to start a conversation. We started conducting menstrual hygiene workshops at Thane and Navi Mumbai in 2018.



GO WITH THE FLOW



**2200 women** have so far switched to eco-friendly menstrual hygiene options







Photo: Beneficiaries at the Bondre Nagar Housing Project location



# SOCIAL HOUSING



After a successful implementation of three major resettlement projects in Pune and Sangli-Miraj impacting over 8000 individuals, we are underway with a live project at Bondre Nagar, Kolhapur that aims to provide secure tenure and well-structured homes to 77 vulnerable families. This unique in-situ rehabilitation project is being implemented under the PMAY housing scheme. The community has shown proactiveness by being involved in planning, designing, and financial management, making this a truly Beneficiary-led construction.



Bondre Nagar bhumi-poojan was a joyous occasion for all stakeholders. The community is full of happy faces as they see their housing society being built in front of their eyes!



## Status at the end of the year 2022-23

Casting of structural members of super structure and brickwork for walls has also commenced. Geo-tagging for plinth level is in process.

**385+**

Individuals to be impacted with this project

## The joy of building together

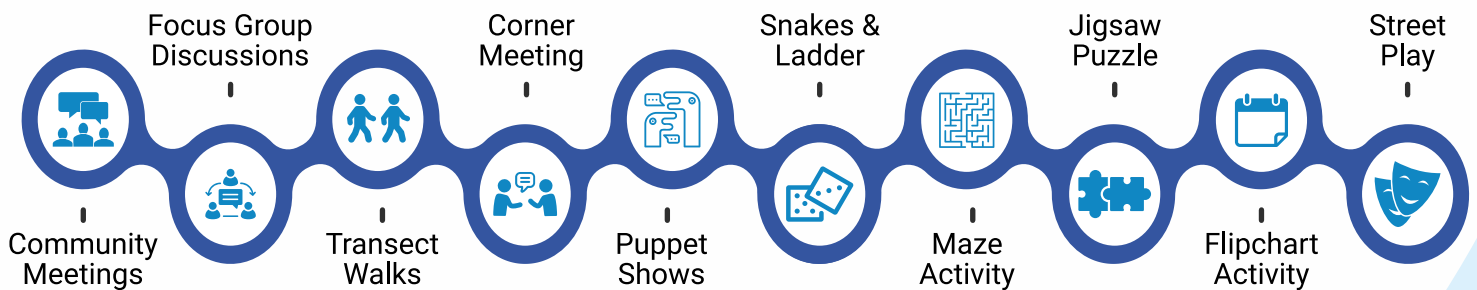
One of the families expressed “Shelter Associates have supported us right from providing toilets and at every stage of the rehabilitation process. We fully trust them and that is why we have begun relocating immediately”. We are touched with the confidence shown by the people in our team and their trust motivates us to expedite this Housing project. This is our 4th social housing project but still the beginning of new construction always gives us goosebumps.



2022-23

# COMMUNITY MOBILIZATION

Slum dwellers are usually deprived of critical information which affects their ability to make decisions. To truly empower them, it is necessary to effectively educate our slum communities by engaging them through effective development communication. Our team of community volunteers engage community members on various issues related to sanitation, health, eco-friendly menstrual hygiene and environment. Through immersive discussions with the community, we transform their knowledge, attitudes and practices. Community engagement is a two-way process for sharing ideas and knowledge that empowers the communities to take action. It initiates a dialogue with the communities which makes our interventions meaningful and sustainable”.



2022-23

## COMMUNITY ENGAGEMENT

Our team of community volunteers engage community members on various issues related to sanitation, health, eco-friendly menstrual hygiene and environment.

This year we deepened our engagement with the community through campaigns, rallies promoting environmental causes, and drawing competitions for children. We celebrated World Toilet Day, Menstrual hygiene day etc. Created awareness and demonstration on the use of Plus codes through a fun game. Communities across cities participated in My Pocket, clean pocket competitions.



**1 lakh**  
slum dwellers  
were engaged in  
various activities  
this year



Shelter Associates have been receiving positive media attention for its various social interventions of Data mapping, Sanitation & Hygiene, Social Housing, Plus Codes and COVID-19 Relief interventions. We have been covered by various National and International media houses, including the prestigious Forbes Inc. that has featured Pratima Joshi as one among 30 most powerful and Self-made women in India.

### शेल्टर असोसिएट्स तर्फे हनुमान नगर येथे वाचनालय सुरु



**खारघर** : शेल्टर असोसिएट्स मार्फत तुर्भे हनुमान नगर झोपडपट्टी मध्ये 'ज्ञानज्योत' वाचनालय सुरु करण्यात आले आहे. या वाचनालयाचे उद्घाटन एप्रिल रोजी संपन्न झाले. याप्रसंगी नवी मुंबई महापालिका उपस्वच्छता निरीक्षक हनुमंत मेश्राम, साहित्यिक राजेंद्र बनसोडे, समाजसेवक सुरेश गायकवाड, 'शेल्टर असोसिएट्स'चे प्रतिनिधी सीमा गावडे, मंगेश कदम, मेधा वंजारे, करण गुप्ता, प्रतीक्षा कांबळे, भूमिका हिरवे, तेजस्विनी पाटील, गजानन चव्हाण आदी उपस्थित होते.

### Menstrual cups better for women on period

Switch from clothes, sanitary napkins to ensure better access to hygiene, and reproductive health

**Menstrual Cups** are better than sanitary napkins for women on their period, according to a study by Shelter Associates in Mumbai. The study found that menstrual cups are more comfortable, easier to use, and more hygienic than sanitary napkins. The study also found that menstrual cups are more affordable and can be used for a longer period of time.



### झोपडपट्ट्यांतील कुटुंबांचा आकार झाला लहान

शहर	घरातील सदस्य संख्या	झोपडपट्टीतील सदस्य संख्या
कोलकाता	५.५	५.१
नवी मुंबई	५.१	५.०
पुणे, पिनो	५.०	३.७

A study conducted by Shelter Associates in Mumbai found that the average number of people living in slum households is significantly lower than in non-slum households. This is due to various factors such as overcrowding, lack of space, and limited resources. The study also found that women in slum households are more likely to use menstrual cups, which is a more hygienic and affordable option compared to sanitary napkins.

### NMMC encourages citizens' participation through 'Chaalta Bolta Swachhta' campaign

The Navi Mumbai Municipal Corporation (NMMC) has launched a campaign called 'Chaalta Bolta Swachhta' to encourage citizens' participation in waste segregation. The campaign involves citizens walking through their neighborhoods and interacting with other citizens to promote the importance of waste segregation. The campaign is being implemented in various areas of Navi Mumbai.



Figure 8: The Shelter Associates homepage



Pratima pointed out that social sector organizations are mostly unaware of OSS and its benefits. Creating a dialogue is paramount to OSS awareness for Abhishek Sharma. He is the product manager at communication platform for NGOs. Abhishek plans to bring a cross-sectoral community together and thinking to create OSS awareness in the social sector.

### वस्तीतील नागरिकांचीही घरात शौचालयाची मागणी

शेल्टर असोसिएट्सच्या पाहणीतील निष्कर्ष असा आहे की, वस्तीतील नागरिकांचीही घरात शौचालयाची मागणी आहे. शेल्टर असोसिएट्सने वस्तीतील नागरिकांच्या समस्यांवर लक्ष ठेवून त्यांच्या घरात शौचालयाची मागणी केली आहे. शेल्टर असोसिएट्सने वस्तीतील नागरिकांच्या समस्यांवर लक्ष ठेवून त्यांच्या घरात शौचालयाची मागणी केली आहे.



**सर्वेष्टातील निरीक्षण**  
 • वस्तीतील नागरिकांच्या घरात शौचालयाची मागणी आहे.  
 • वस्तीतील नागरिकांच्या समस्यांवर लक्ष ठेवून त्यांच्या घरात शौचालयाची मागणी केली आहे.

2022-23

OPEN SOURCE SOFTWARE



**विमाननगर** : वस्तुविशारदांचा सत्कार (डावीकडून) प्रिया गोखले, प्रतिमा जोशी, सुश्रू आठवले, शशांक परांजपे, आलोक आपटे.

### वास्तुविशारदांचा सत्कार

पुणे, ता. ४ : वास्तुविशारदांचा सत्कार कल्पकता आणि नावांन्याना शोध घेणाऱ्या २४ जणांचा वाईड अँड फोरमच्यावतीने सत्कार करण्यात आला. 'प्रांजपे स्कीम'चे (कन्स्ट्रक्शन) व्यवस्थापकीय संचालक शशांक परांजपे आणि महिलांना घर मिळावे यासाठी काम करीत असलेल्या सामाजिक संस्थेच्या संचालिका प्रतिमा जोशी यावेळी प्रमुख पाहणी उपस्थित होत्या. 'समाजकार्य आणि समाजकल्याणामाठी आणखीन वास्तुविशारदां या क्षेत्रात असाधारण हवेत. त्यातून नावांन्याना पिढीमध्ये आत्मोयता निर्माण झाली पाहिजे.' या वेळी प्रांजपे यांनीही आपले मनोगत व्यक्त केले.

# FINANCIALS



THE MAHARASHTRA PUBLIC TRUSTS ACT,1950  
SCHEDULE IX [Vide Rule 17 (1)]

NAME OF THE PUBLIC TRUST : SHELTER  
ASSOCIATES  
ADDRESS : ARUNODAYA , 769/7,  
DECCAN GYMKHANA ,  
PUNE - 411004.  
REGISTRATION NO. : F- 9162 (Pune)

## INCOME AND EXPENDITURE ACCOUNT FOR THE YEAR ENDED 31.03.2023

31.03.2022 (Rs.)	EXPENDITURE	SCH. NO.	31.03.2023 (Rs.)	31.03.2022 (Rs.)	INCOME	SCH. NO.	31.03.2023 (Rs.)
NIL	<u>TO EXPENDITURE IN RESPECT OF PROPERTIES</u>	-	NIL	NIL	<u>BY RENT</u>	-	NIL
NIL	<u>TO ESTABLISHMENT EXPENSES</u>	-	NIL	38,47,180.60	<u>BY INTEREST</u>	J	33,29,956.83
NIL	<u>TO REMUNERATION TO TRUSTEES</u>	-	NIL	NIL	<u>BY DIVIDEND</u>	-	NIL
NIL	<u>TO LEGAL EXPENSES</u>	-	NIL	61,97,115.00	<u>BY DONATIONS IN CASH OR KIND</u>	K	17,95,488.02
75,000.00	<u>TO AUDIT FEES AND PROFESSIONAL FEES</u>	-	75,000.00	6,24,10,434.00	<u>BY GRANTS</u>	L	3,06,35,298.00
NIL	<u>TO CONTRIBUTION AND FEES</u>	-	NIL	NIL	<u>BY INCOME FROM OTHER SOURCES</u>	-	NIL
NIL	<u>TO AMOUNTS WRITTEN OFF</u>	-	18,328.00	-	Creditors Written Back		-
NIL	<u>TO MISCELLANEOUS EXPENSES</u>	-	NIL	36,358.00	Profit on Sale of Fixed Asssets		-
1,83,801.00	<u>TO DEPRECIATION</u>	E	2,67,740.00	41,845.00	Honorarium		1,500.00
7,00,08,543.64	<u>TO AMOUNTS TRANSFERRED TO RESERVE OR SPECIFIC FUNDS Sanitation, Toilet &amp; Hygiene Projects Fund</u>	-	1,10,000.00	NIL	<u>BY TRANSFER FROM RESERVE</u>	-	76,23,612.00
22,65,587.96	<u>BY SURPLUS CARRIED OVER TO BALANCE SHEET</u>	-	39,38,531.06	NIL	General Fund		3,97,023.87
					Foreign Contribution		
<b>7,25,32,932.60</b>	<b>TOTAL (Rs.)</b>		<b>4,37,82,878.72</b>	<b>7,25,32,932.60</b>	<b>TOTAL (Rs.)</b>		<b>4,37,82,878.72</b>

AS PER OUR REPORT OF EVEN DATE  
FOR ACHYUT EKHE & CO  
(FORMERLY ACHYUT & EKHE)  
CHARTERED ACCOUNTANTS  
FIRM REGN. NO. 114973W

Sd/-

DATED TRUSTEES  
AT 10th August 2023

DATED  
AT 10th August 2023

Sd/-

CA Sameer Ekhe  
(PARTNER)  
M. NO. 124933

# FINANCIALS



THE MAHARASHTRA PUBLIC TRUSTS ACT, 1950  
SCHEDULE VIII [Vide Rule 17 (1)]

NAME OF THE PUBLIC TRUST : SHELTER  
ASSOCIATES  
ADDRESS : ARUNODAYA , 769/7,  
DECCAN GYMKHANA ,  
PUNE - 411004.  
REGISTRATION NO. : F- 9162 (Pune)

## BALANCE SHEET AS AT 31ST MARCH, 2023

31.03.2022 (Rs.)	FUNDS AND LIABILITIES	SCH. NO.	31.03.2023 (Rs.)	31.03.2022 (Rs.)	PROPERTY AND ASSETS	SCH. NO.	31.03.2023 (Rs.)
16,85,789.18	<u>TRUST FUNDS OR CORPUS :-</u>	A	21,35,789.18	NIL	<u>IMMOVABLE PROPERTIES:-</u> (at Cost)	-	NIL
3,54,99,157.34	<u>OTHER EARMARKED FUNDS :-</u> (Created under the provisions of the trust deed or scheme or out of the income)	B	2,62,12,726.00	NIL	<u>INVESTMENTS :-</u> (Market value of the above investments is Rs.....)	-	NIL
NIL	<u>LOANS(SECURED OR UNSECURED):-</u>	-	NIL	15,29,848.00	<u>FURNITURE, FIXTURES AND OTHER ASSETS :-</u>	E	13,59,280.00
2,03,93,428.21	<u>LIABILITIES :-</u>	C	36,10,998.38	NIL	<u>LOANS(SECURED OR UNSECURED):-</u>	-	NIL
				45,71,348.86	<u>ADVANCES :-</u>	F	12,42,811.79
				20,661.00	<u>INCOME OUTSTANDING :-</u>	G	2,48,955.00
2,45,02,957.16	<u>INCOME AND EXPENDITURE ACCOUNT :-</u>	D	2,99,33,771.69	7,59,59,474.03	<u>CASH AND BANK BALANCES :-</u>	H	5,90,42,238.46
				NIL	<u>INCOME AND EXPENDITURE ACCOUNT :-</u>	-	NIL
<b>8,20,81,331.89</b>	<b>TOTAL (Rs.)</b>		<b>6,18,93,285.25</b>	<b>8,20,81,331.89</b>	<b>TOTAL (Rs.)</b>		<b>6,18,93,285.25</b>

The above Balance Sheet to the best of my/our belief  
contains a true account of the Funds & Liabilities and  
of the Property & Assets of Trust.

AS PER OUR REPORT OF EVEN DATE  
FOR ACHYUT EKHE & CO.  
(FORMERLY ACHYUT & EKHE)  
CHARTERED ACCOUNTANTS  
FIRM REGN. NO. 114973W

Sd/-

Sd/-

DATED TRUSTEES  
AT 10th August 2023

DATED  
AT 10th August 2023

CA Sameer Ekhe  
(PARTNER)  
M. NO. 124933  
UDIN NO : 23124933BGUJAX5888



## A Life of Ease



**Anjana Dnyaneshwar Salve**  
House No: 626, Yashwant Nagar,  
Yerwada, Pune

In Yashwant Nagar, Anjana's family of 8 dwelled in a small, full house. A place for everyone to sit, sleep and an in-house business left no room for a toilet. The lack of a toilet in the house made it harder for her brother to get married. Their home had an elderly mother-in-law and little grandchildren to account for.

Like many others, Covid-19 had left a hole in Anjana's pocket. Anjana's wife was expecting a baby and longed for a toilet, but no one at home could even dream of it at the time. Finances were tight. When Anjana found out about our "One home, One toilet" scheme he promised his family a toilet in their home too. He filled the form, met a mason and built his dream toilet.

Soon, the family was blessed with a baby girl who will no longer have to go out in the open or into the dirt. She has a clean, safe space. His brother too, will soon get married. Anjana conveys his heartfelt gratitude to Shelter Associates for providing the material for construction and making it easier to have a toilet in the house.

## Comfort in all ways



**Manisha Hirmani Wagh**  
H.no. 3409, Shastri Nagar, Thane

Pads were convenient as I didn't have to wash and dry them. I could play again even during those days but one day I fell violently ill with very high fever and rashes around my private region. I could not even sit and cried in pain each time I touched myself there. I went to an expert gynaecologist who treated me with medicines and advised me to wear loose clothes. She recommended the menstrual cup but I was terrified with the idea of putting something foreign in my body. I kept using pads even though I could no longer bear the pain. I overheard some women from my community talk about an upcoming menstrual hygiene awareness workshop. Curious I reached the workshop conducted by SA team. I learnt so much that day about female anatomy, why we get periods and what hygienic practices to follow during periods. The team explained everything so well. It was like a very dear friend of mine is gently talking to me. They introduced the menstrual cup which my doctor spoke about. They also showed the different ways one can use the cup according to one's comfort level. They gave me a cup for free. I was excited to try it out.

After the initial hesitation, I soon got used to the cup and found it very convenient. Now I don't have to use the toxic pads, neither do I get rashes due to wetness. For the first time I felt free even during my periods. What is even more satisfying is the fact that menstrual cups are eco-friendly, whereas sanitary pads pollute the environment. Isn't it great? I thank SA from the bottom of my heart for creating a program dedicated to women's health. No one talks about it and we women silently suffer. I urge all girls and women to take menstrual hygiene very seriously.

# VOLUNTEERING EXPERIENCES



Shelter Associates is grateful to the volunteers/students who have been a part of the organization and have gone back with a great amount of learning. This year too we had architectural interns and community volunteers who brought in their expertise and contributed towards the ongoing development of Shelter Associates.



**Nikita Bhatt**  
Urban Planning Intern, Navi Mumbai

“ Being a student of urban housing but working on the projects on Sanitation was a bit challenging at first but it was made a worthwhile experience with the guidance of the Dhanshree Ma'am and other social workers to learn new concepts. I was also given a chance to share my thoughts and ideas which encouraged me to learn new concepts in this field. The work that SA does is very much required in Navi Mumbai and it is helping people living in the slums to upgrade their lifestyles and a step toward a clean India. ”



**Sakshi Doijode**  
Architectural Intern, Pune

“SA provides a unique opportunity for architects and interns to work and learn not only about architecture but many others aspects . It is a great opportunity for interns to gain practical skills and learn about working on projects that relates to real problems of society. Interns experience a great exposure to the work and their field of study. ”



**Arundhati Shinde**  
Urban Planning Intern, Kolhapur

“The summer internship at Shelter Associates was a great learning experience. I worked on two different projects namely 'Housing' and 'Google Plus Code' in Kolhapur. While working I came across different situations through which I learned many new concepts. Additionally, It helped me gain a lot of practical knowledge through site visits. I got to explore urban planning, new infrastructure practices, and slum rehabilitation as well. Overall it was a knowledgeable experience. ”

## A LEARNING OPPORTUNITY



We are happy to invite students/volunteers for Data Management, Architecture, Urban planning, Social Work, Advertising and PR, Research, Documentation, etc. We ensure a good exposure and a deep understanding of ground realities for the intern/volunteer joining us.

Mail your interest to [info@shelter-associates.org](mailto:info@shelter-associates.org)

2022-23

# THANKING OUR PARTNERS



Shelter Associates is extremely grateful to all our Partners, Urban Local Body Members and Funding Organisations for the invaluable support through which we have been able to accomplish our goals and can continue working towards the betterment of the urban poor. Together we are making a difference!

## PARTNERS



Collective Good Foundation



## FUNDERS



IKEA India



Sun Vacuum Formers

TRW Sun Steering Wheels Pvt. Ltd.



2022-23






GIVE A LITTLE, HELP A LOT

## DONATION APPEAL



We request support from organizations and individuals.  
Your donation is welcomed in the form of financial support, services, or IT equipment  
Scan the above code or contact [info@shelter-associates.org](mailto:info@shelter-associates.org)



 /shelter3associates.com

 @ShelterAssts

 /shelter3associates

'Kanha', Lane no. 18, Plot no. 40, Mahatma Society, Kothrud, Pune, 411 038